

## Faculty

### Prof. Robert Hermans

Dept of Radiology, University Hospitals Leuven, Belgium

### Prof. Ann King

Chinese University of Hong Kong & Prince of Wales Hospital, Hong Kong

### Prof. Davide Farina

Dept of Radiological Sciences, University of Brescia, Italy

### Dr. Steve Connor

King's College Hospital and Guy's & St Thomas' Hospital, London, UK

### Dr. Kunwar Bhatia

Imperial College Healthcare NHS Trust, UK

## CPD

Attendees will receive a certificate showing 7 CPD credits awarded according to the CPD scheme of the Royal College of Radiologists.

## ICIS Membership

ICIS membership is open to all individuals with an interest in cancer imaging for only £90 per year. Benefit from reduced registration fees by **joining ICIS today!** Other membership benefits include:

- Discounted registration fees for the Annual Teaching Course and ICIS interactive workshops
- Access to our Members' only section of the website to view our webinars, lectures from previous meetings, as well as all scientific and educational posters
- 20% discount on article processing fees for our journal Cancer Imaging
- Save 20% on CRC Press radiology and oncology publications

## Sign up to our monthly eNewsletter!

Subscribe to our monthly newsletter to be kept informed about ICIS classroom and online courses, free webinars and the latest articles featured in Society Journal, Cancer Imaging.



Follow us:

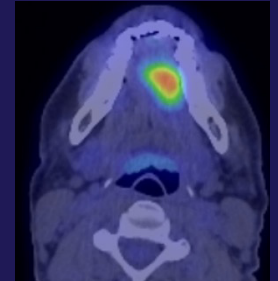
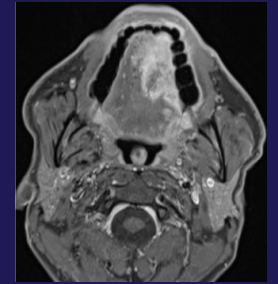


ICIS is a registered Company; registered in England & Wales.  
Registered No: 3908709. Registered Office: 41 Waddington Way, London. SE19 3UB  
Registered as a Charity, No: 1082082



# Online Learning

# Masterclass in Head & Neck Cancer Imaging



## Thursday 6 & Friday 7 November 2025

Society Corporate Supporter

[icimagingociety.org.uk](http://icimagingociety.org.uk)

**SIEMENS**  
Healthineers

This Masterclass in Head & Neck Cancer Imaging will be delivered online, over two half-days, as a workstation-based teaching course, highlighting the range of tumoural lesions occurring in this complex body region. The relative value of different imaging modalities will be addressed, with examples of atypical appearing lesions demonstrated alongside more typical imaging patterns seen in different subsites.

Attention will be paid to pertinent findings that may change patient management, and the role of imaging in patient surveillance after treatment of head and neck cancer will be reviewed. Our expert faculty have extensive clinical knowledge and experience, and delegates will benefit from mentored case-based learning enhanced by direct access to individually review between 35-40 brand new cases, each chosen to illustrate specific learning points. The detailed workbook summarising all the cases, delivered directly to you for use during the course, will provide a valuable resource of information relating to imaging in this complex body region.

Participants must have access to two screens for the duration of the course. As this is an interactive course, limited to 24 participants, we ask that you join using a device with a camera to achieve the optimum experience. Please refer to the joining instructions for full details of screen requirements (see the ICIS website for details).

## How to Register

Register online at [icimatingsociety.org.uk / Events & Education > Upcoming Events](https://www.icimatingsociety.org.uk/Events%20&%20Education%20>%20Upcoming%20Events).

Please complete all details and select payment option.

**Full payment must be received by 9 October 2025.**

Registration will not be confirmed until full payment has been received.

## Registration Fees

ICIS Member	£365
ICIS Non-Member	£405
ICIS Membership	£90

### Workbook postage

Please note that delivery of your workbook will be subject to an additional charge as follows:  
UK £16 / Europe £33 / Rest of world £50

## Payment Options

Credit Card / PayPal
BACS (UK only)
IBAN-SWIFT/BIC (all non-UK payments)

## Learning objectives

- To discuss the patterns of spread of primary head and neck tumours on imaging studies
- To illustrate some diseases potentially mimicking the appearance of a primary head and neck neoplasm
- To discuss the value of post-treatment imaging in distinguishing expected findings, treatment complications and tumour recurrence
- To discuss the imaging findings in salivary and thyroid gland disease

## Key Features

- Mentored case-based learning of 35 – 40 cases
- Each case chosen to illustrate specific learning points
- A detailed workbook containing all cases to be discussed will be posted to your specified address before the course to enhance the learning experience

## Course Programme

### Thursday 6 November

08:30	Technical test session for delegates
09:00	Welcome and introduction
09:15	Session 1: Patterns of primary tumour spread
11:00	Break
11:15	Session 2: Post-treatment imaging
13:00	Close

### Friday 7 November

08:30	Session 3: Soft tissue tumour mimics
10:15	Break
10:30	Session 4: Glandular disease
12:15	Close

*\* Times shown as GMT*

## Important information

Please complete all registration details. Full payment must be received by 9 October 2025. Registration will not be confirmed until full payment has been received.

Reservations are subject to availability and will be confirmed within one week from receipt of completed booking form and full payment.

Refunds (minus an administration charge of £70) will only be made if written notification is received by 9 October 2025. Thereafter no refunds will be made.

Queries should be addressed to:  
[admin@cancerimatingsociety.org.uk](mailto:admin@cancerimatingsociety.org.uk)